

Hype vs. Reality: A.I./Robotics and the impact on employability

Charles Fadel

New York City – March 19, 2014



CENTER FOR
CURRICULUM
REDESIGN

With Sincere Thanks to

THE WILLIAM AND FLORA
HEWLETT
FOUNDATION



THE USCIB FOUNDATION



**McGRAW HILL
FINANCIAL**

**Global
Institute**

Our World

VUCA

Volatile

Uncertain

Complex

Ambiguous



Societal Challenges

Greed

Financial Meltdown

Global Warming

Personal Privacy

Intolerance

Religious fundamentalism

Political Absolutism



Personal Challenges

Employability
Belonging
→ Happiness



Economic Challenges

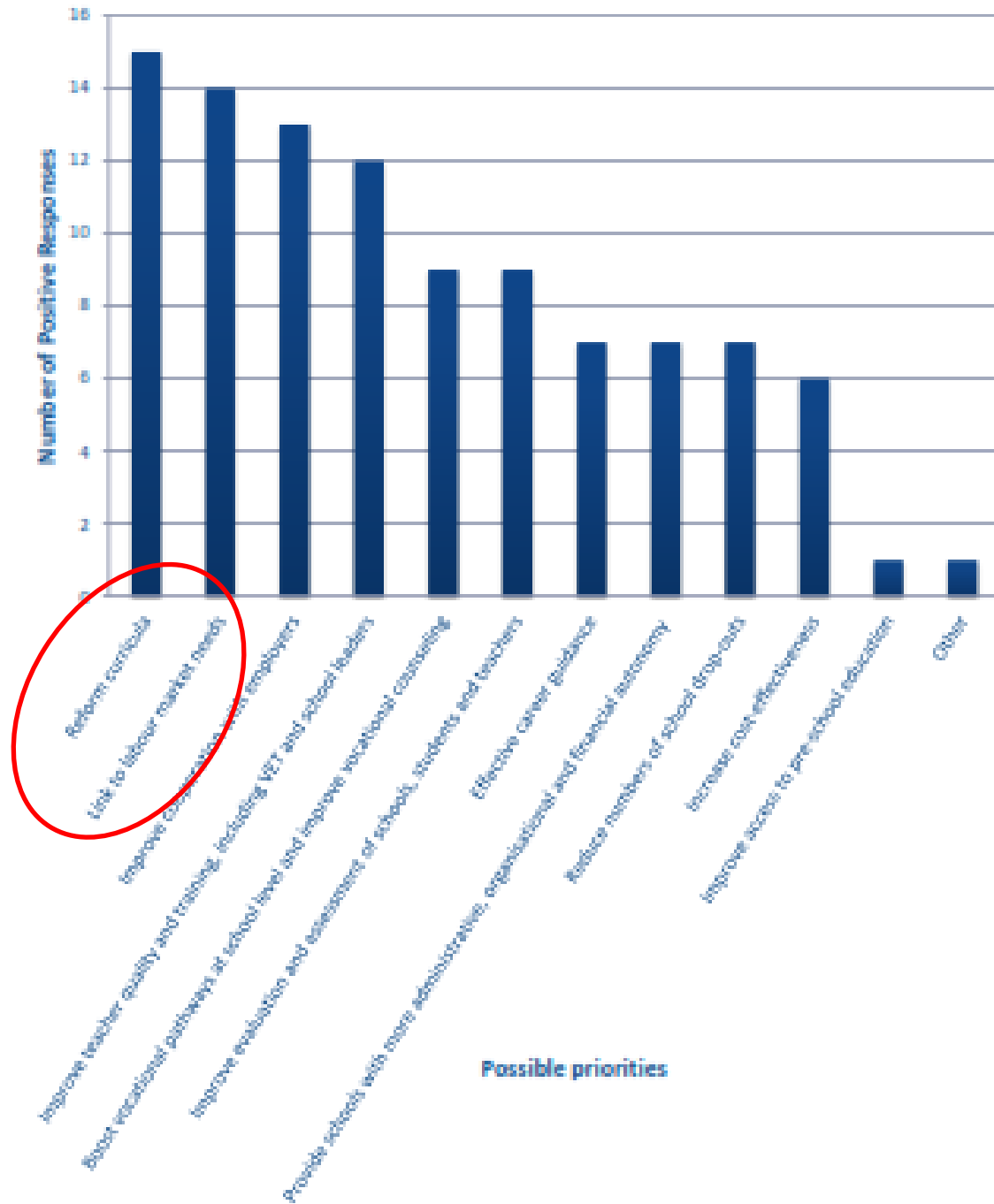
Globalization
Innovation



BIAC Voice of Employers Globally

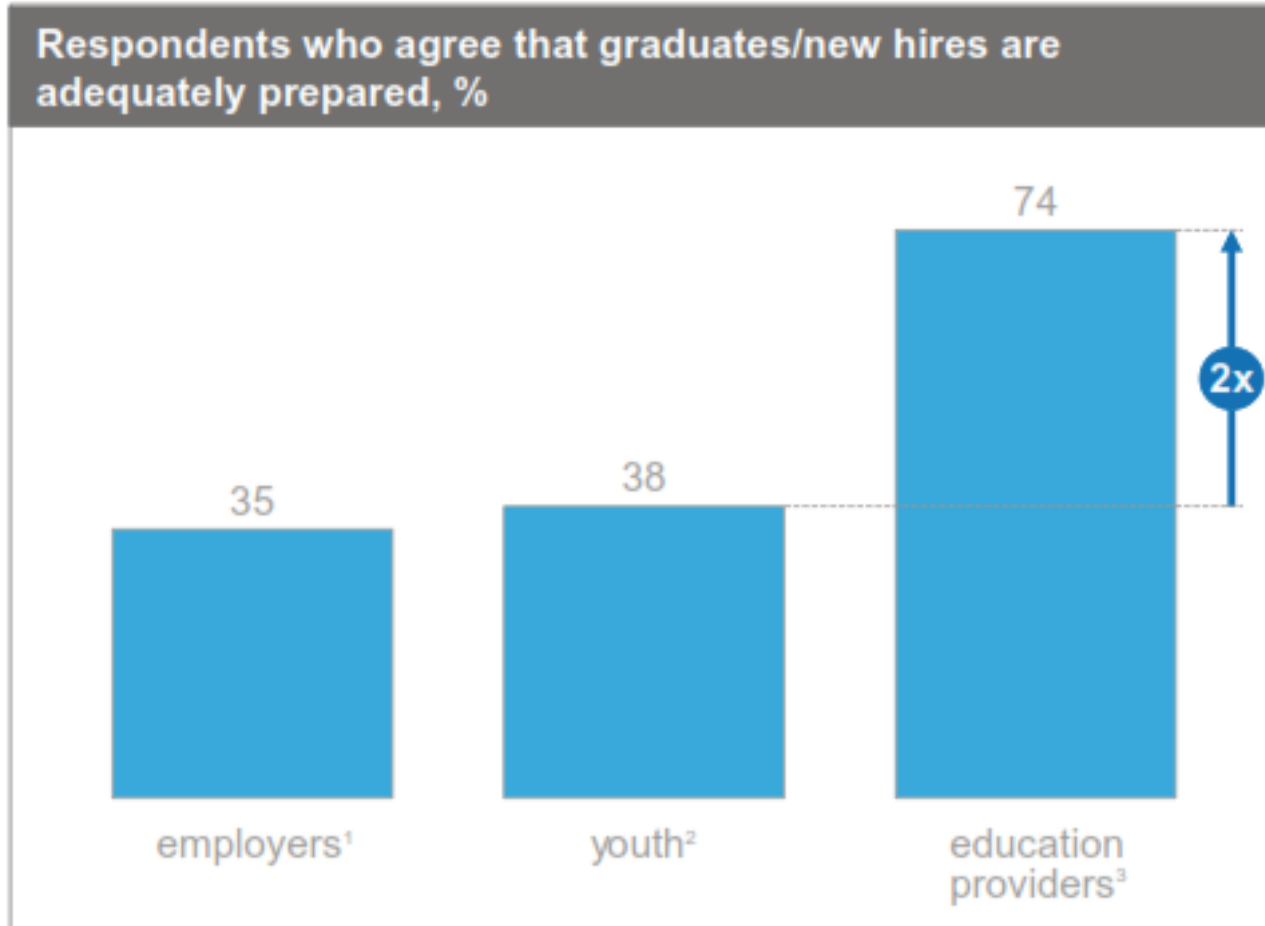
- 1) Reform curricula
- 2) Link to labor market needs

Chart 3 (a) Employers' Top Priorities for Education Policy Reform in Schools



Reality check

Providers are twice as likely as employers and youth to rate youth as prepared

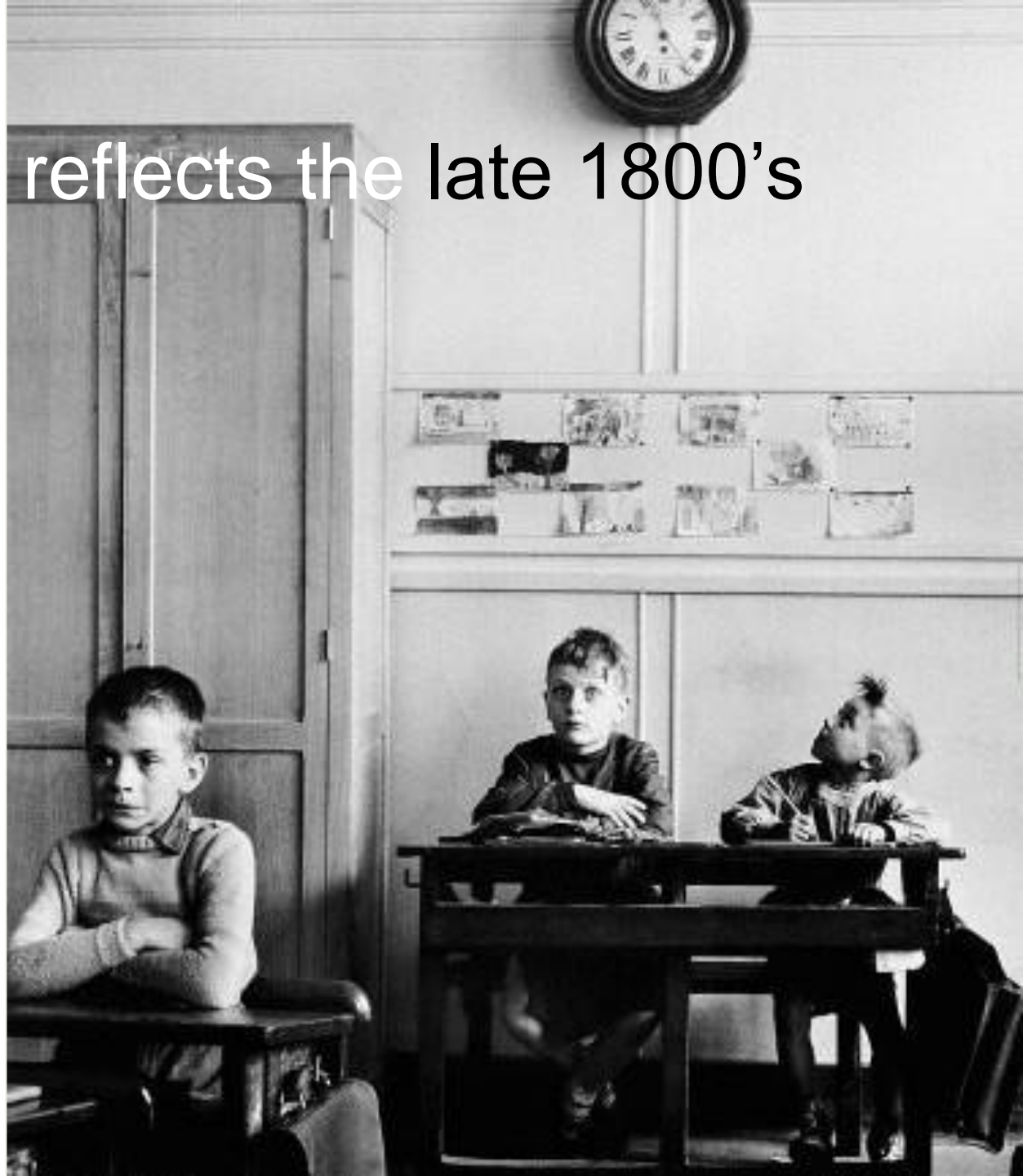


¹ Overall, the entry-level employees we hired in the past year have been adequately prepared by their prehire education and/or training.

² Overall, I think I was adequately prepared for an entry-level position in my chosen career field.

³ Overall, graduates from my institution are adequately prepared for entry-level positions in their chosen field of study.

Curriculum reflects the late 1800's



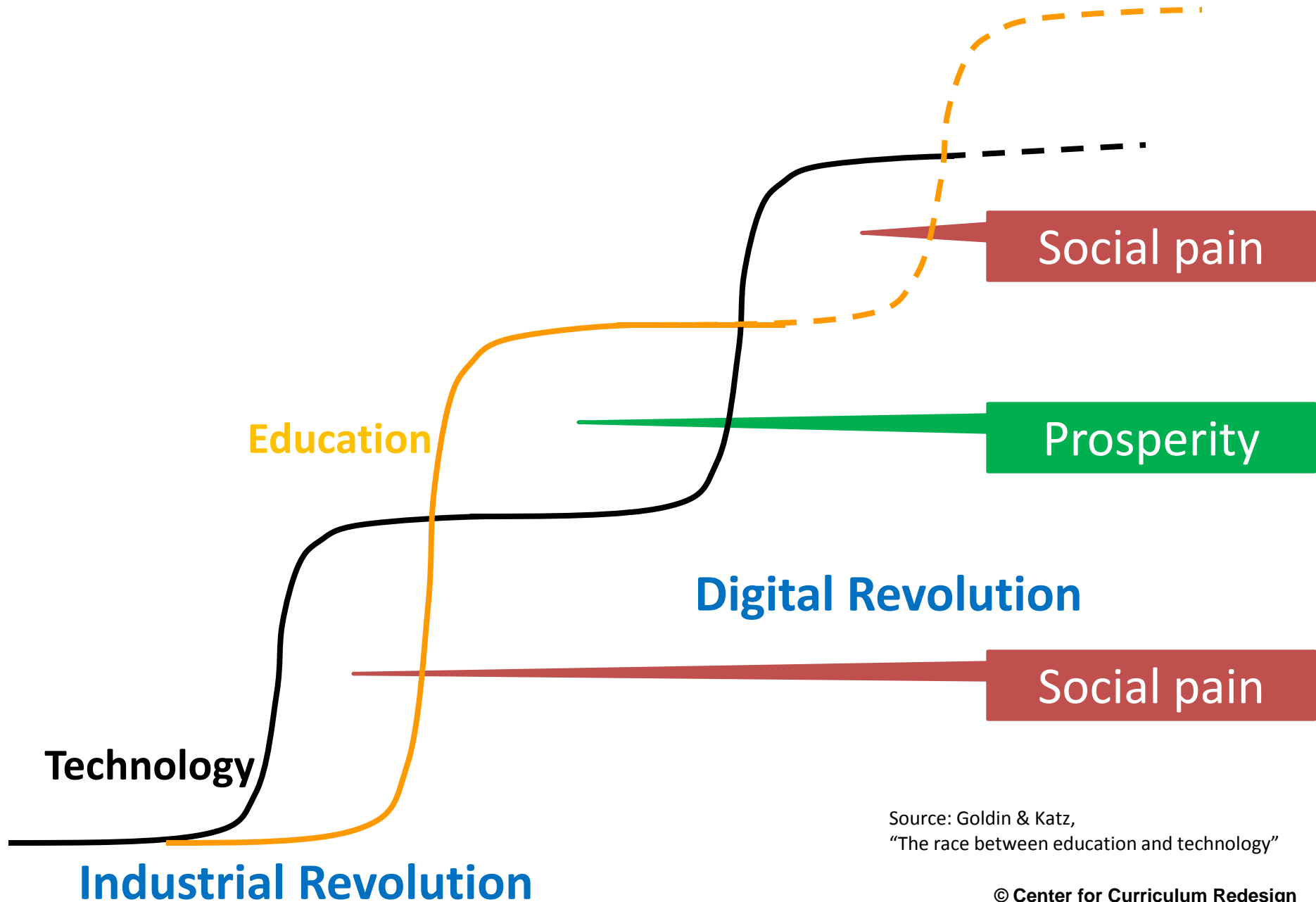
And not today's world



Nor tomorrow's

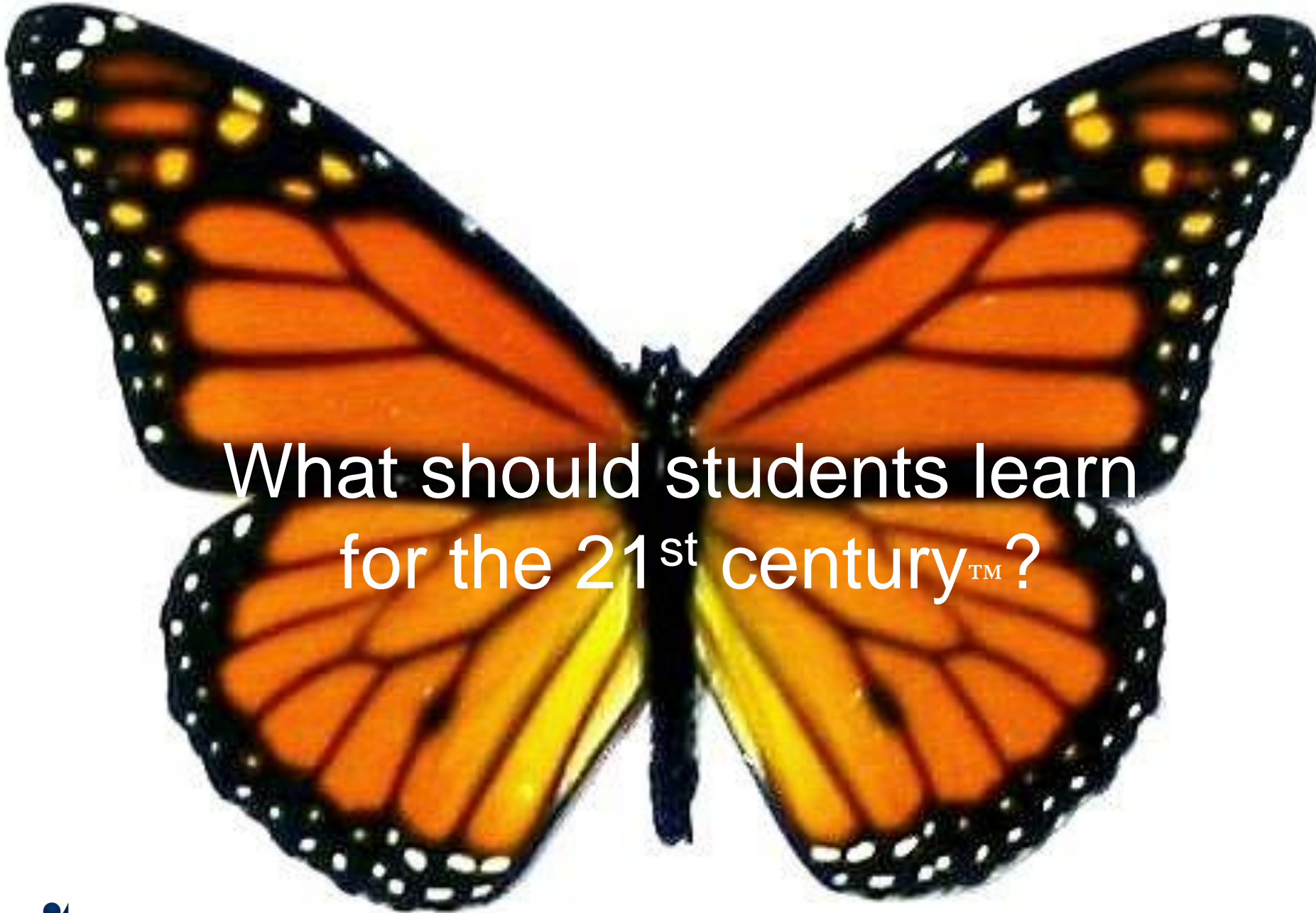


Technology and education are in a race



Is this time different ?





What should students learn
for the 21st century™?

For a better world





CENTER FOR
CURRICULUM
REDESIGN

Coalition of key global players

International organizations



Jurisdictions



FINNISH NATIONAL
BOARD OF EDUCATION



Government of Alberta
Education



Ontario



Academia



Massachusetts
Institute of
Technology



Olin College



Penn
UNIVERSITY of PENNSYLVANIA

STANFORD
UNIVERSITY

Foundations & Non-Profits

Fondation
Henri Moser



Fondation
Helvetica
Educatio



BILL & MELINDA
GATES foundation



THE WILLIAM AND FLORA
HEWLETT
FOUNDATION

acara

McGraw-Hill
Research Foundation



ny sci



Corporations

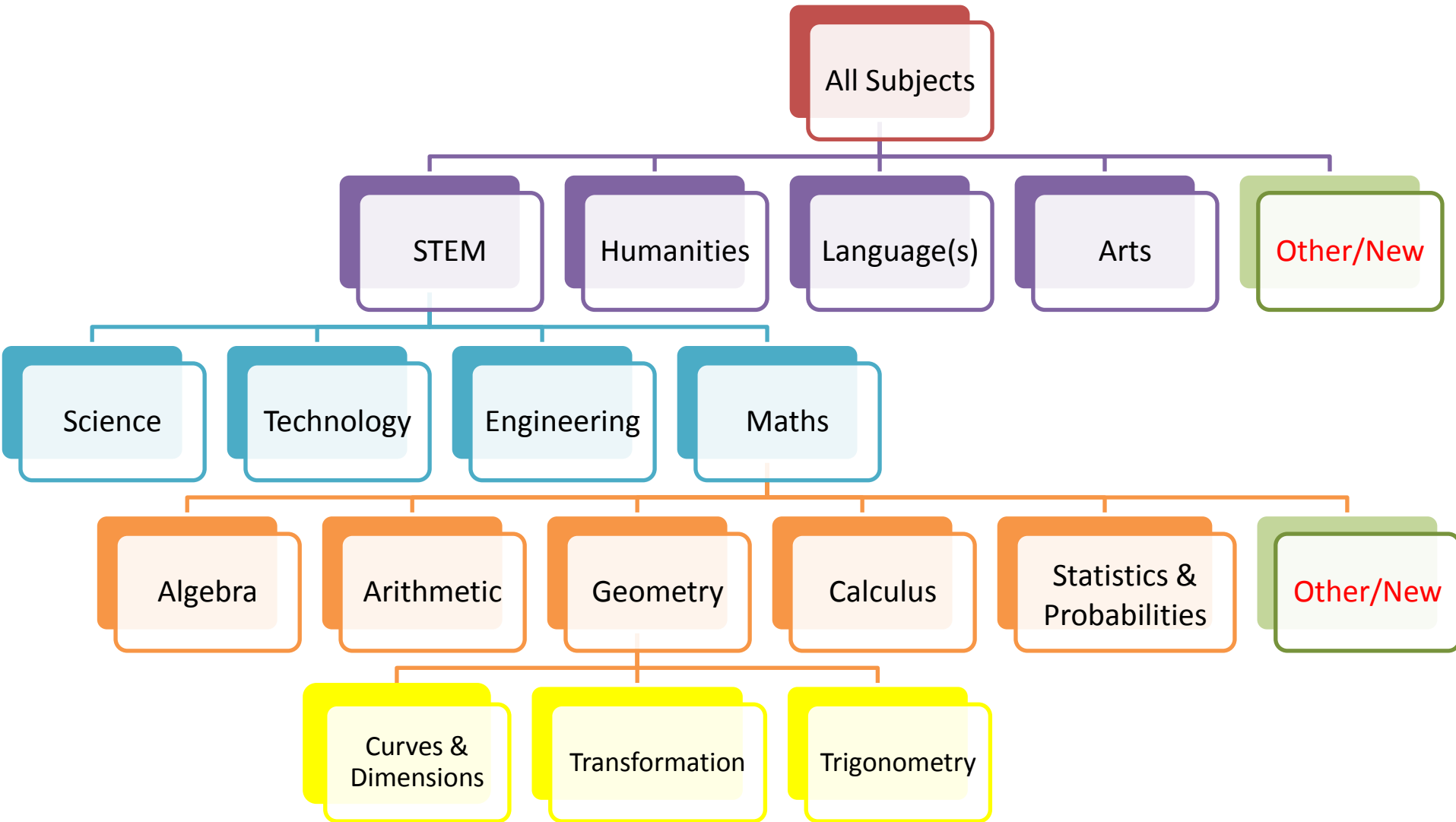


Microsoft

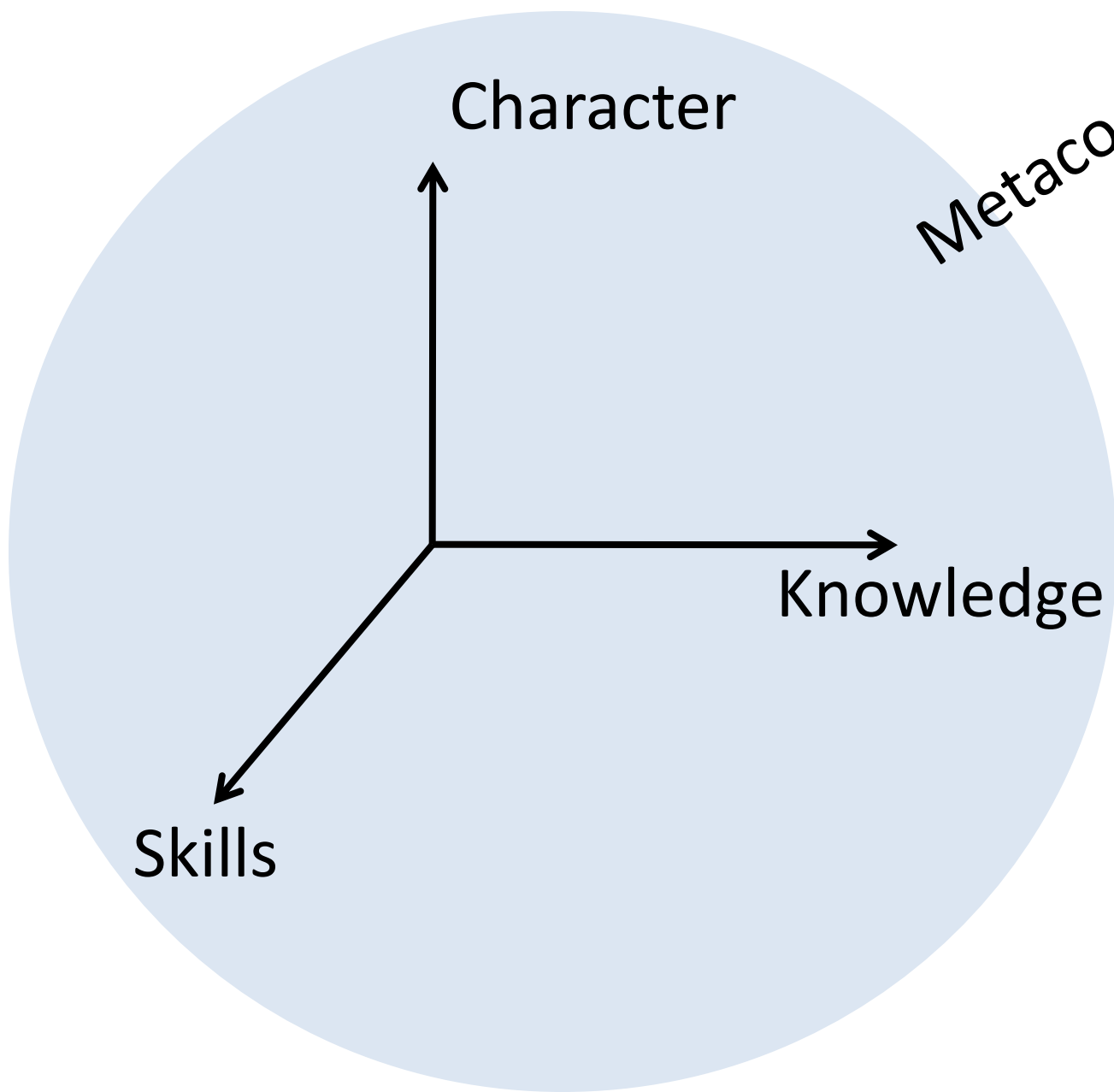


WOLFRAM
MAKERS OF MATHEMATICA
AND WOLFRAM|ALPHA

...to redesign education standards... (Math as example here)



...on the basis of all dimensions,



Metacognition

***E*ducation
with a
capital “E”**

Leveraging our entire selves



head

hand

heart

Reassess Knowledge for relevance



The background is a dark, textured surface with a complex network of glowing, interconnected lines and nodes, resembling a molecular structure or a digital network. The lines are thin and white, with small, bright circular nodes at the intersections. The overall effect is a sense of depth and complexity, with the network appearing to recede into the distance.

Learn Skills

Creativity

Critical Thinking

Communication

Collaboration

Build Character



Intrapersonal:

- Mindfulness
- Curiosity
- Courage
- Resilience

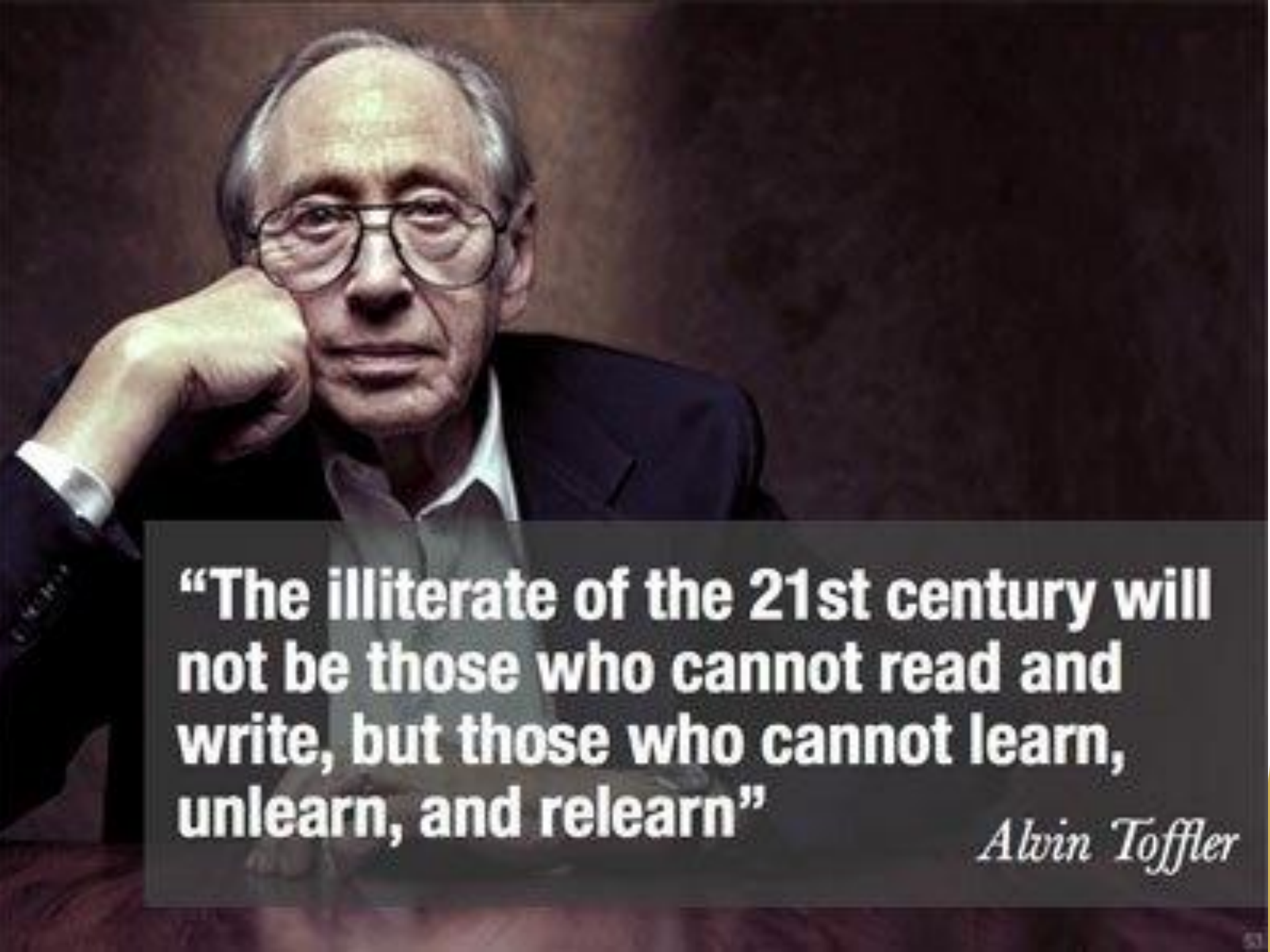
Interpersonal:

- Ethics
- Cooperation
- Leadership

Train metacognition

Learning how to Learn

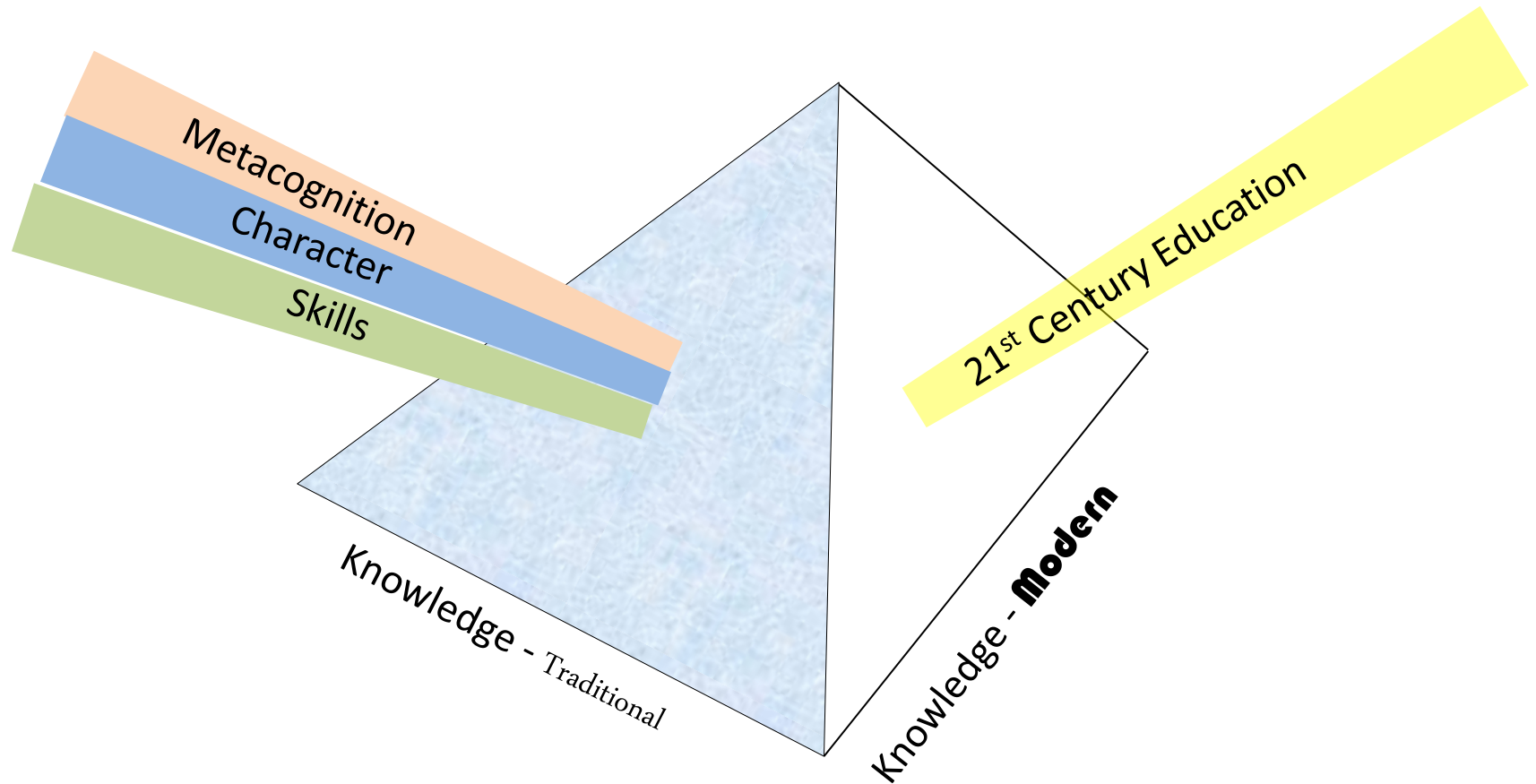




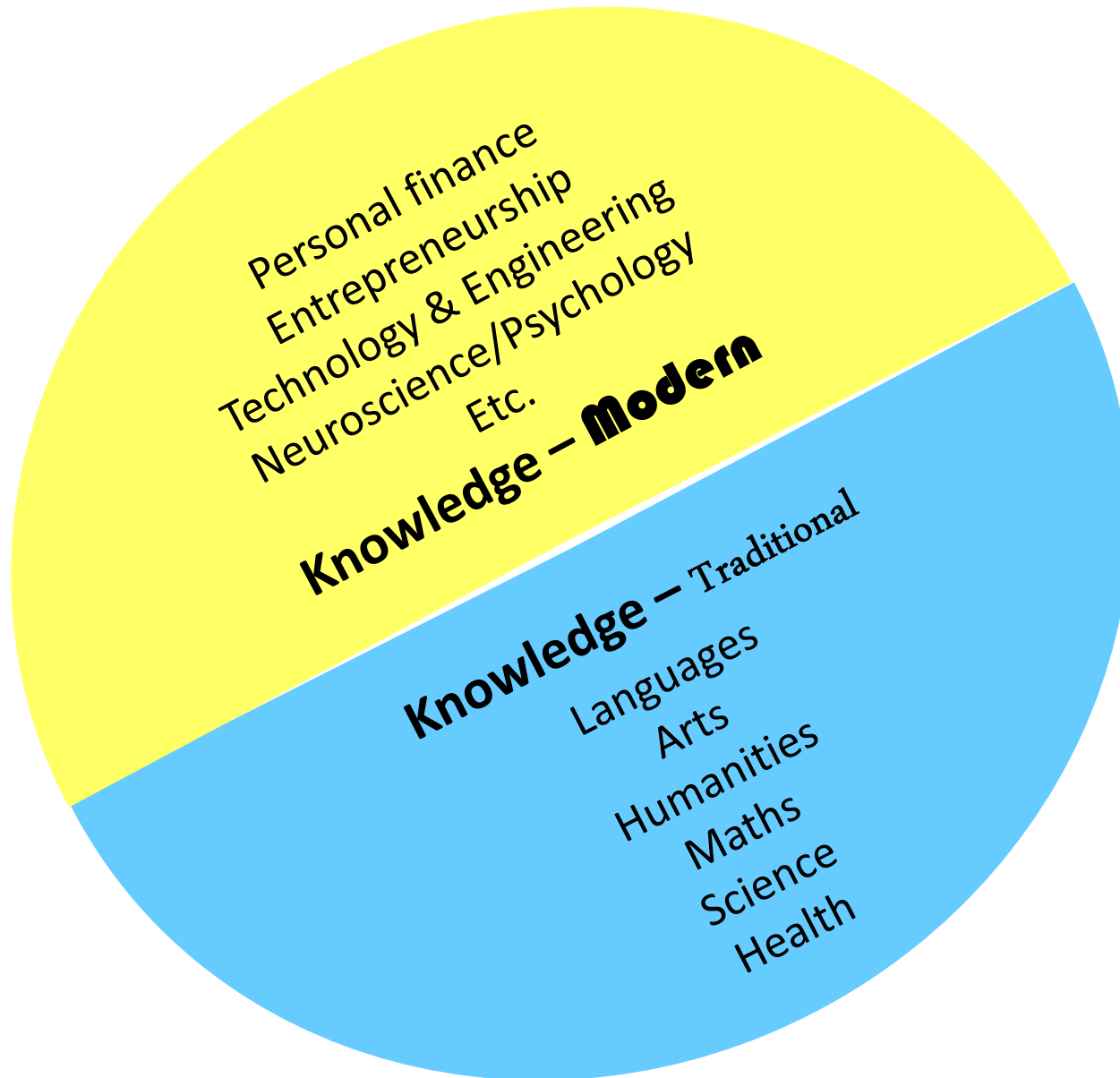
“The illiterate of the 21st century will not be those who cannot read and write, but those who cannot learn, unlearn, and relearn”

Alvin Toffler

...through the prism of Knowledge



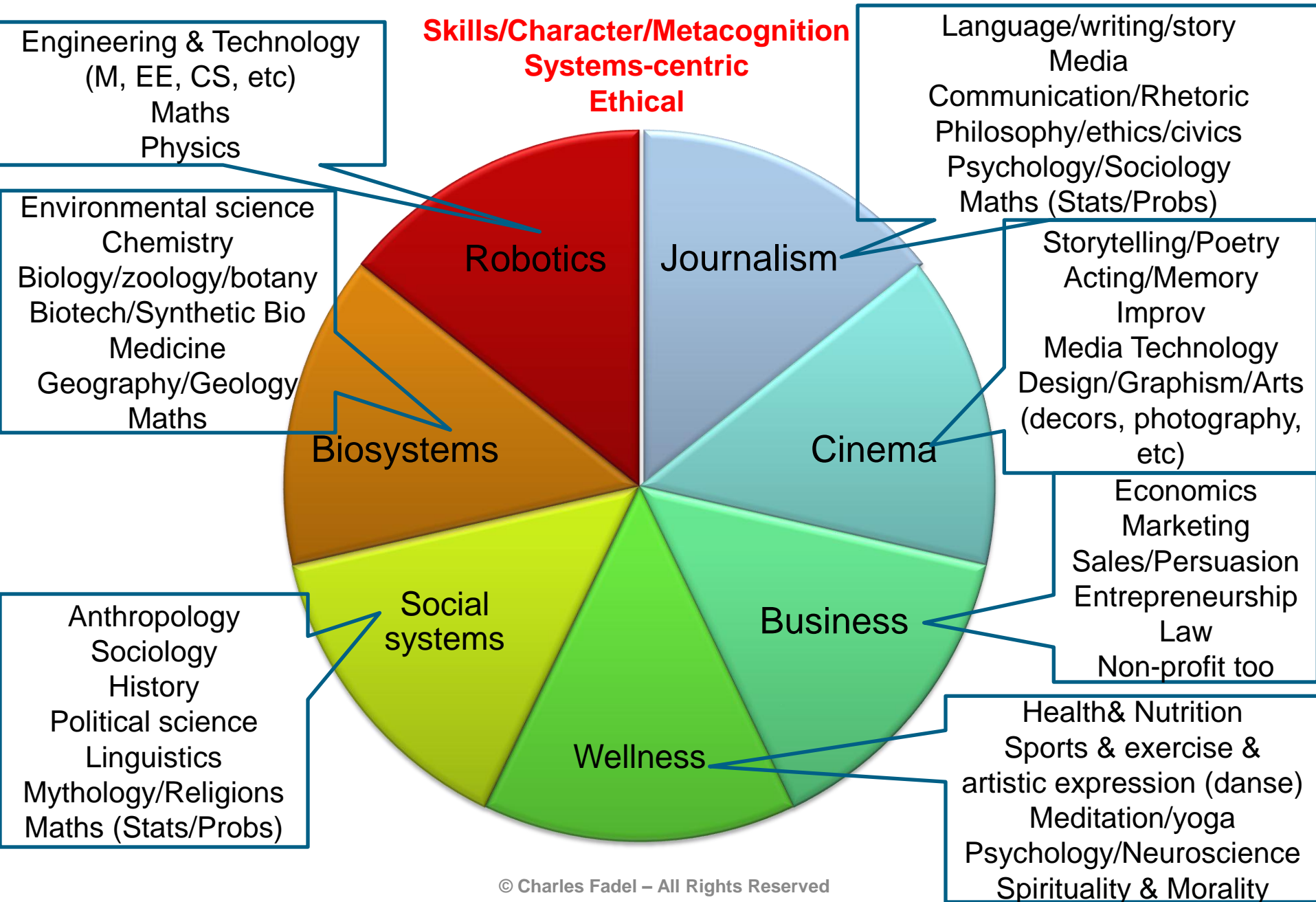
...while incorporating Modern knowledge,



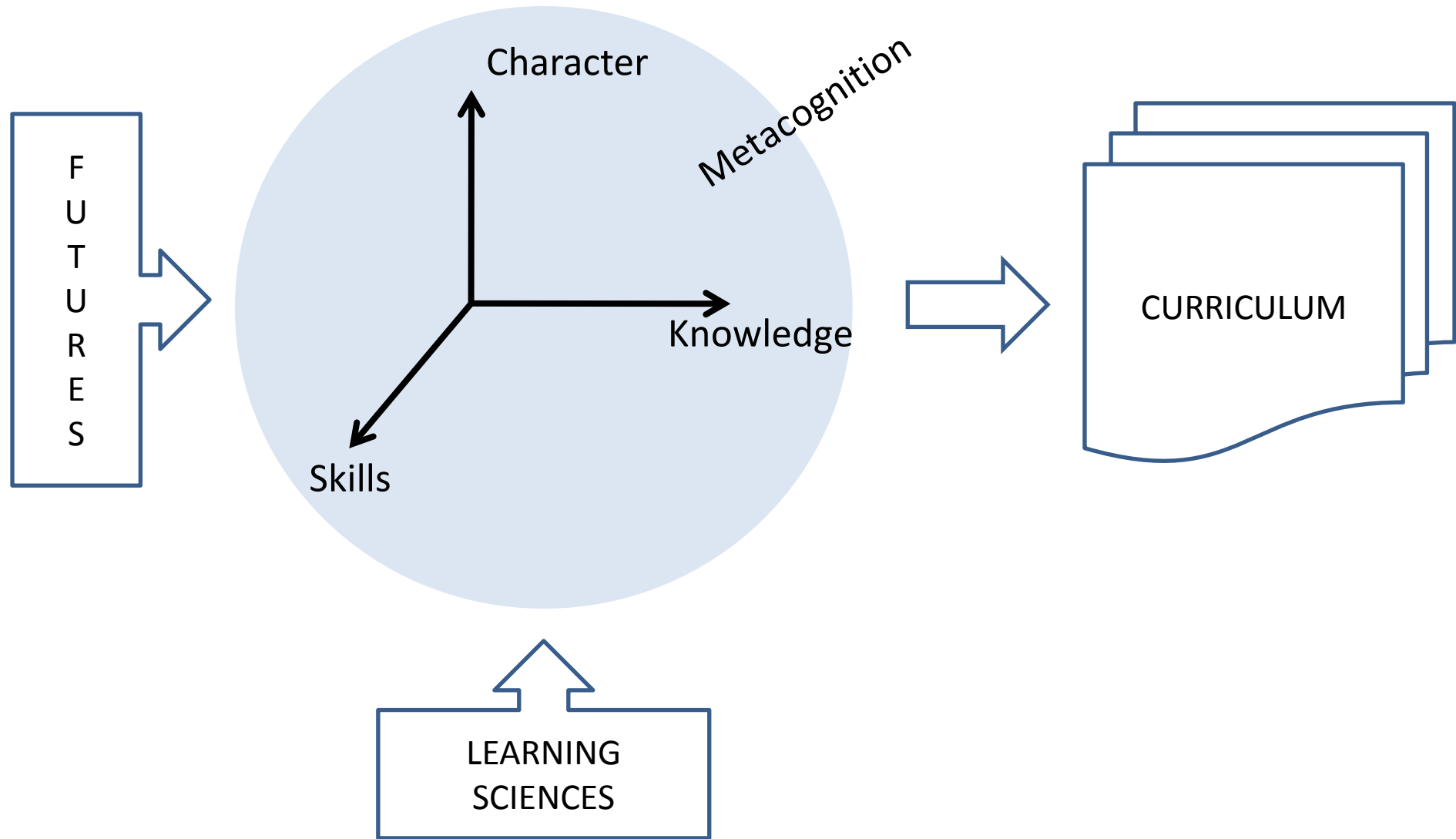
Harness interdisciplinarity

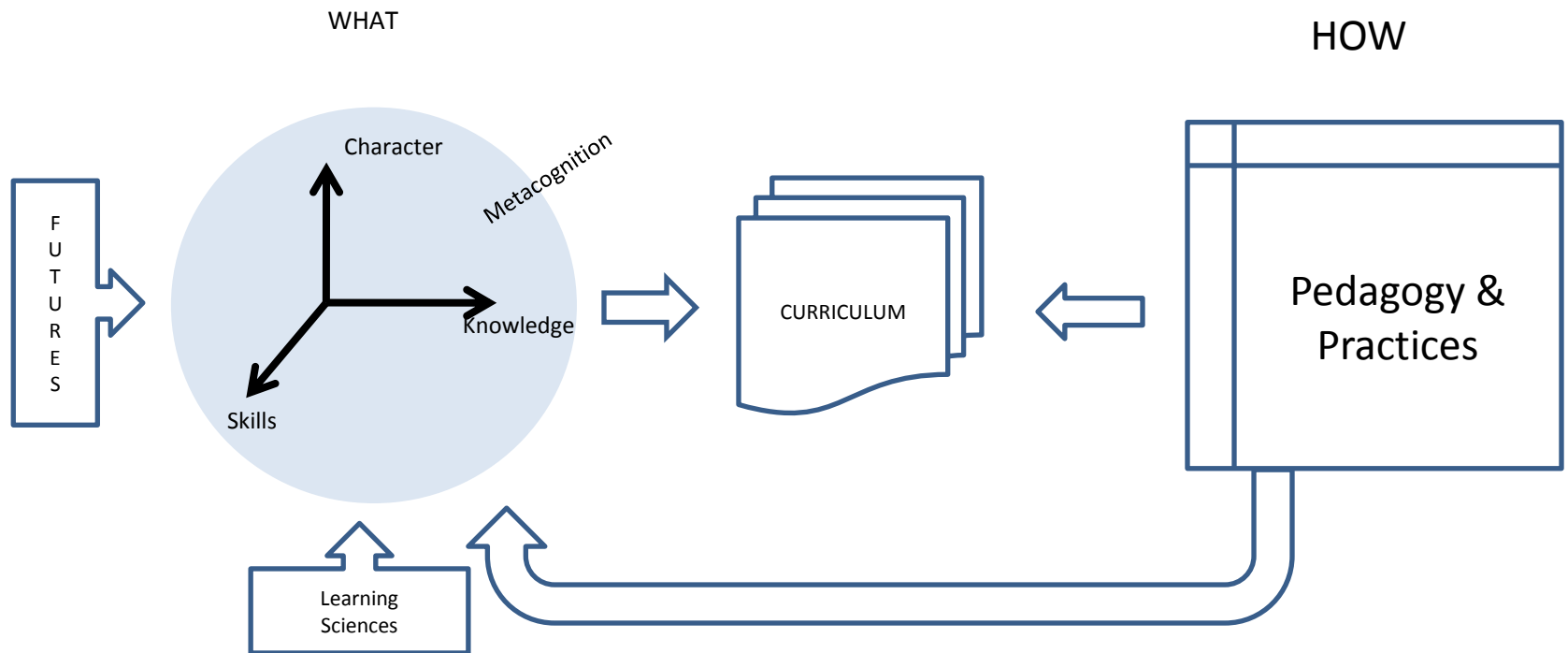


Integrated Fields (reflecting subject domains only)

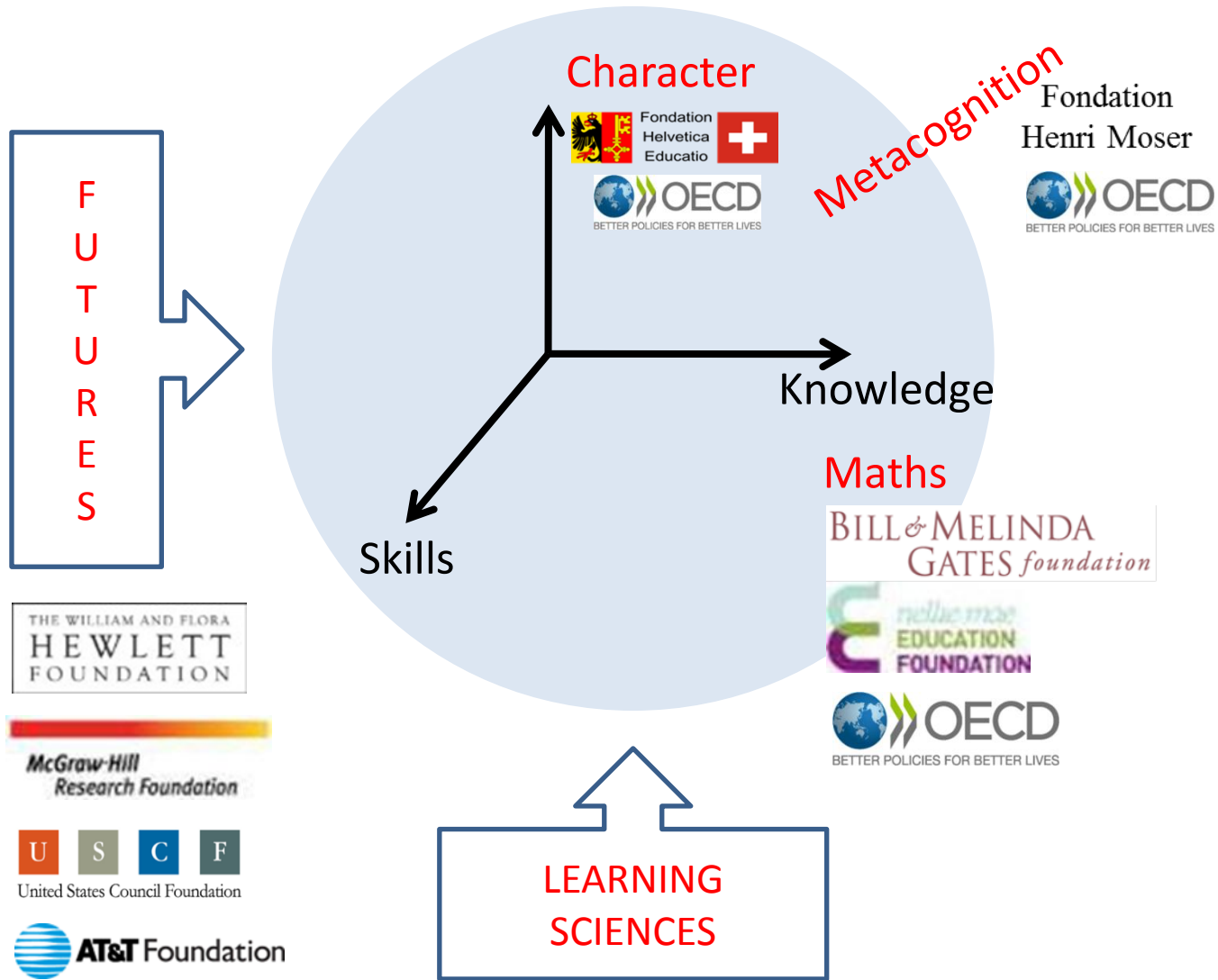


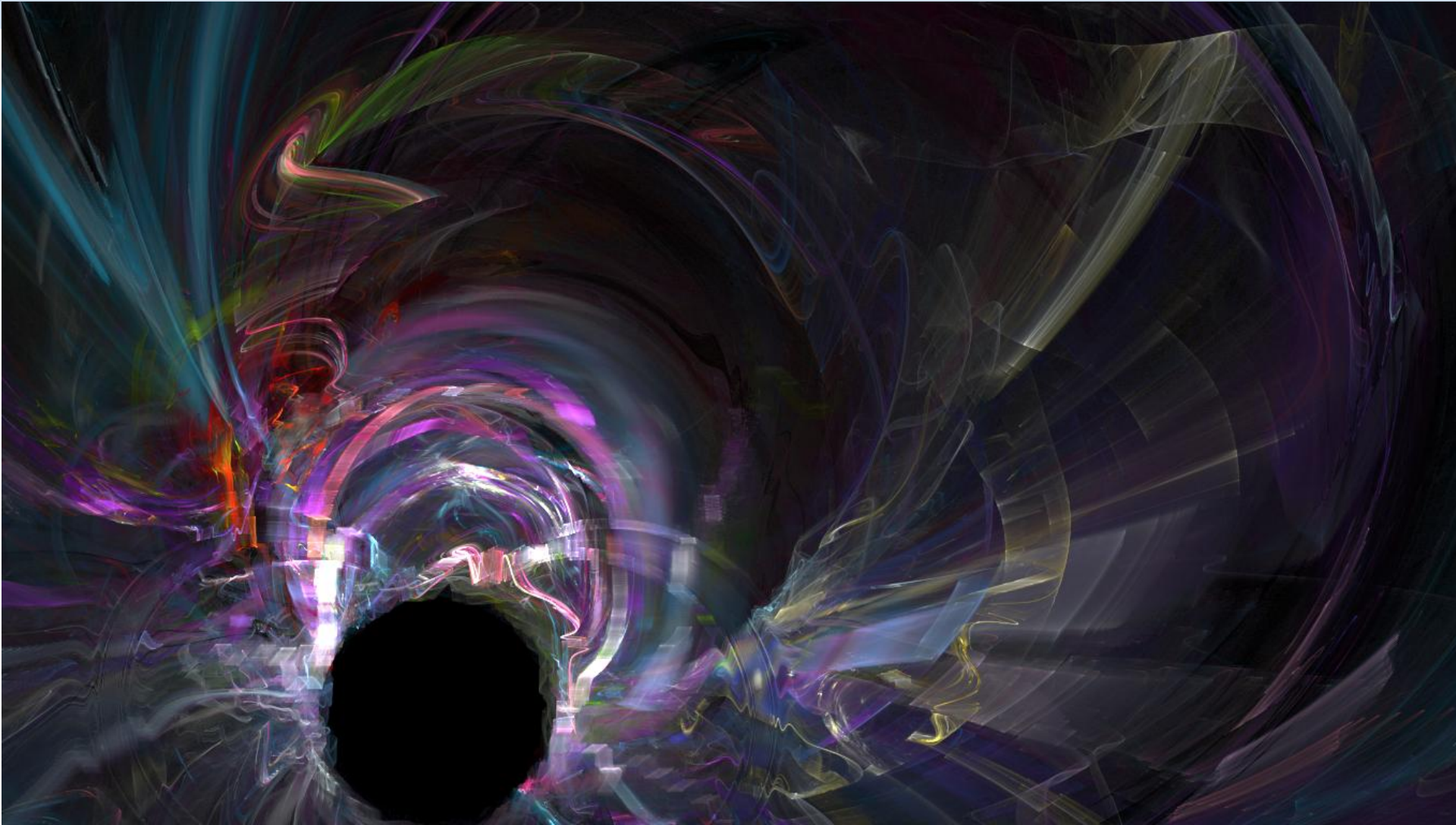
WHAT





2012	H1 2013	H2 2013	H1 2014	H2 2014	H1 2015	H2 2015	H1 2016	H2 2016	2017	2018
			Knowledge - Traditional							Final Consolidation & Reconciliation
			Knowledge - Modern							
Skills										
			Character							
		Metacognition								
Futures & Economics										
Learning Sciences										





“Event Horizon”: What if formal education cannot catch up ?

Protocol

Deep, candid, respectful debates

Keeping in mind our personal biases (psychological and occupational)

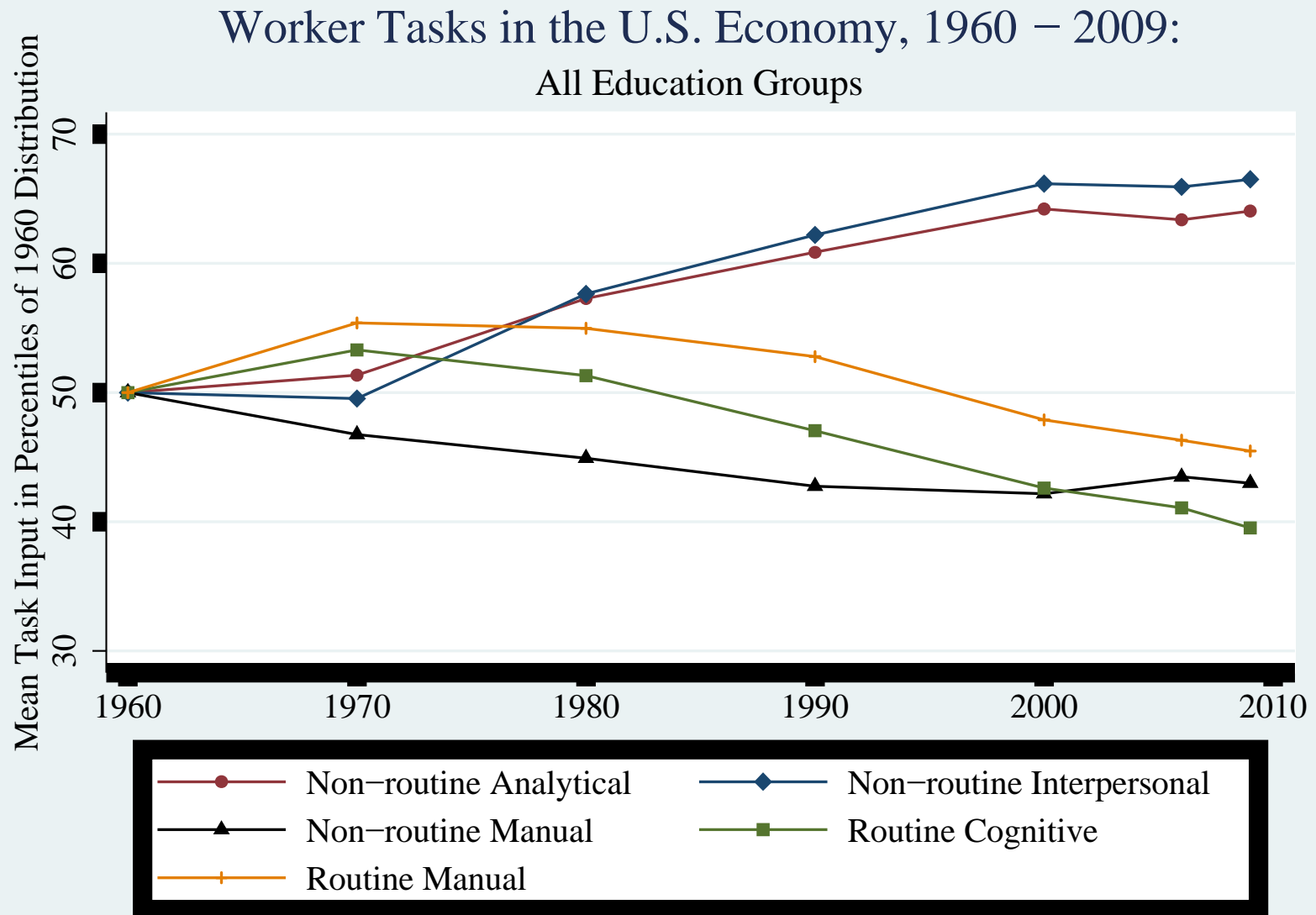
Succinct interventions

Off-the-record

Avoiding jargon and acronyms

Q&A from Observers at specific intervals

Autor, Levy and Murnane '03 Figure 1 Update: Economy Wide Changes in Job Task Content 1960 - 1998

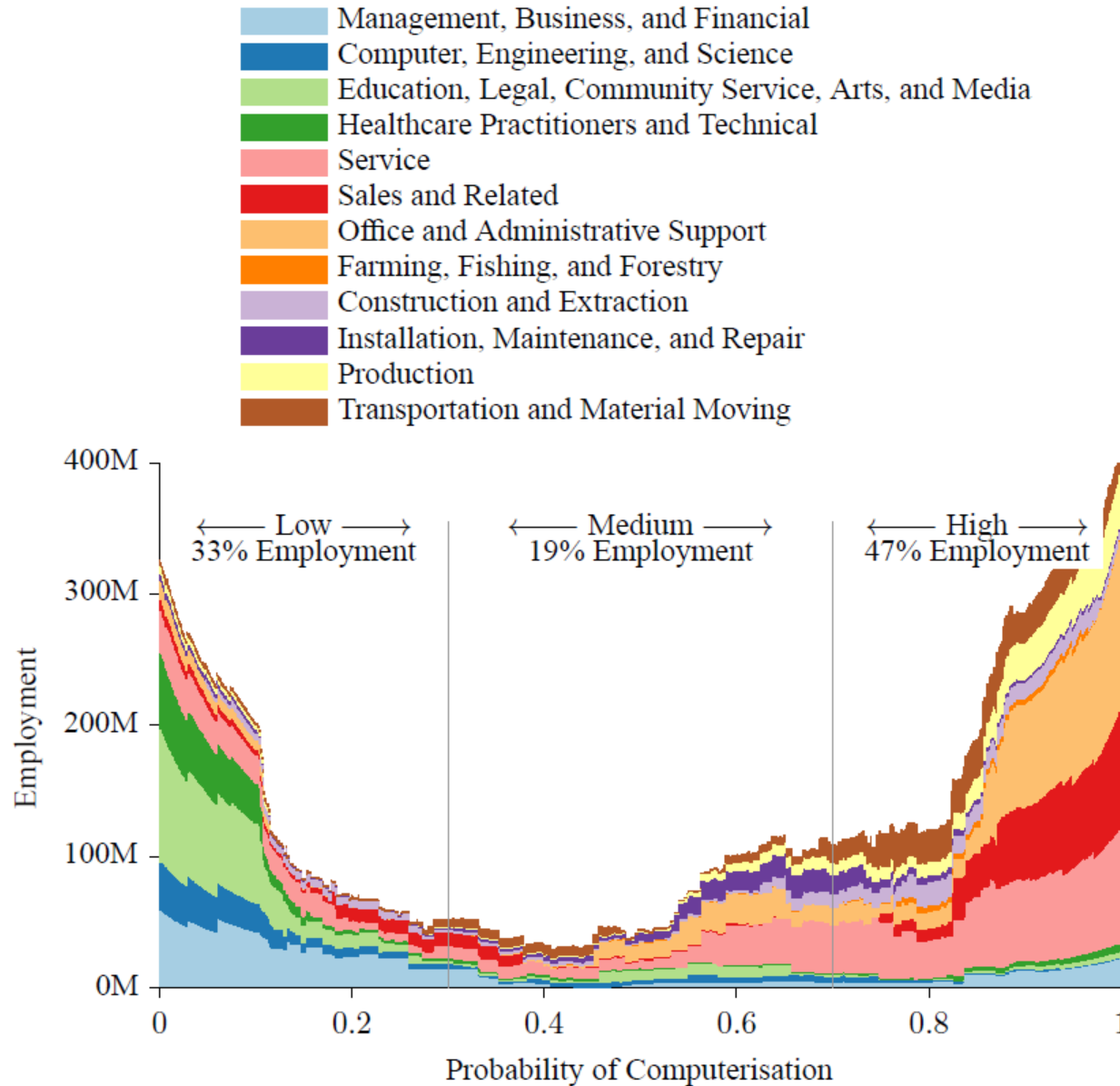


Alarmism ?



Yet... alarmism can be good to make policymakers and the public take notice and stave off the problems...

Science or Pseudoscience ?



Source: Oxford Martin School: The Future of Employment; September 2013



"All those in favour of accepting more robots?"

EMPLOYEES OF THE MONTH

JANUARY



ETHEL

FEBRUARY



MATT

MARCH



FRANK

APRIL



CAROL

MAY



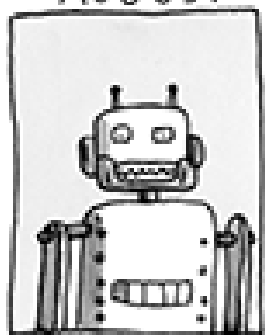
MARTON

JULY



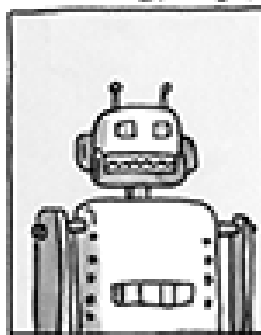
TOM

AUGUST



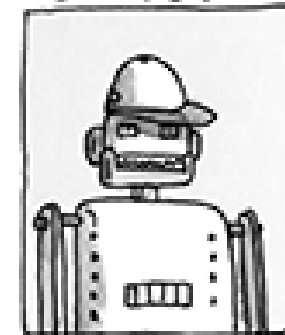
AUTOTRON

SEPTEMBER



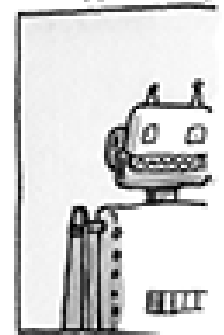
AUTOTRON

OCTOBER



AUTOTRON

NOVEMBER



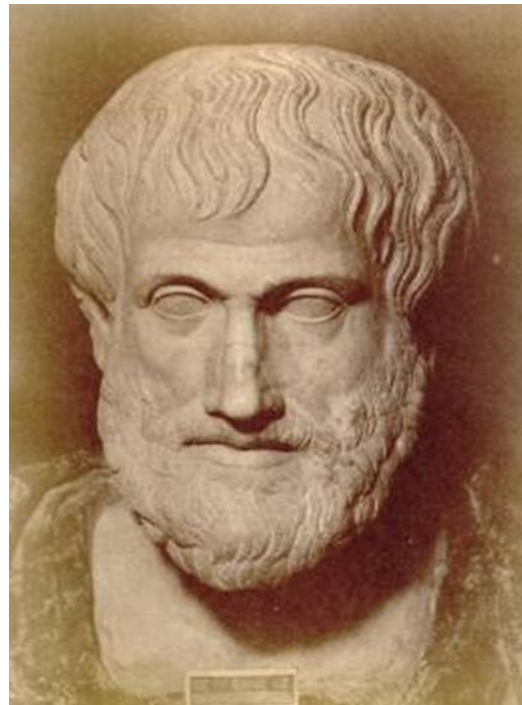
AUTOTR

Kanin

The Predictions Are Not Recent

“If every tool, when ordered, or even of its own accord, could do the work that befits it... then there would be no need either of apprentices for the master workers or of slaves for the lords.”

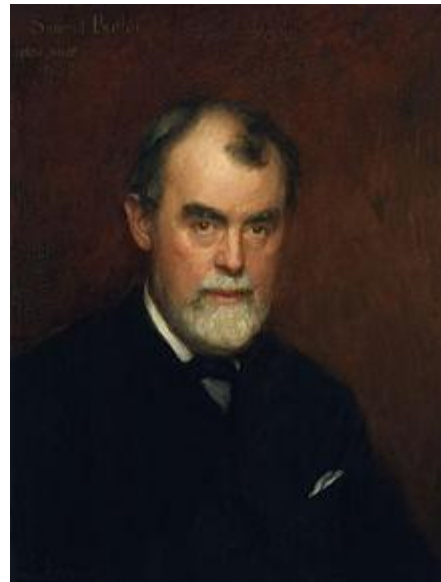
Aristotle, 322 BC



“Darwin among the Machines”

“That the time will come when the machines will hold the real supremacy over the world and its inhabitants is what no person of a truly philosophic mind can for a moment question.”

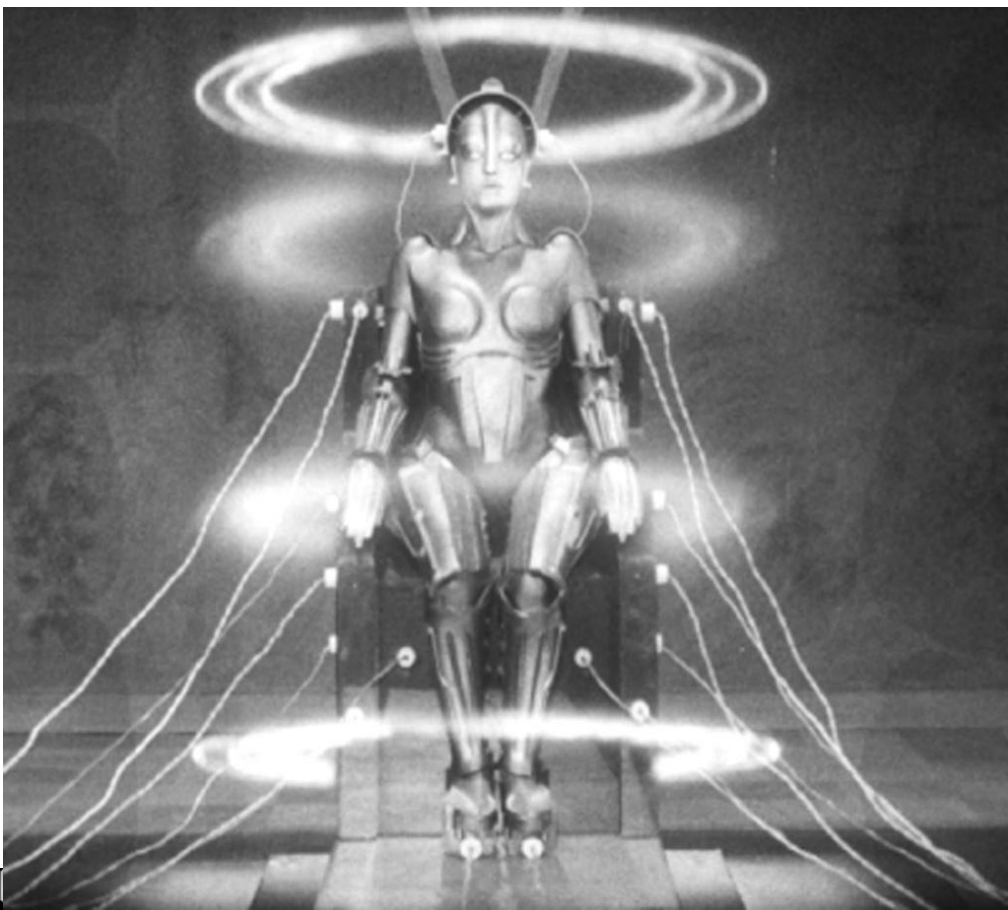
Samuel Butler, 1863



Recurring Theme

“I have created a machine in the image of a man, that never tires or makes a mistake. Now we have no further use for living workers.”

Fritz Lang's *Metropolis*, 1926



Hype Cycle



Source: Gartner Group

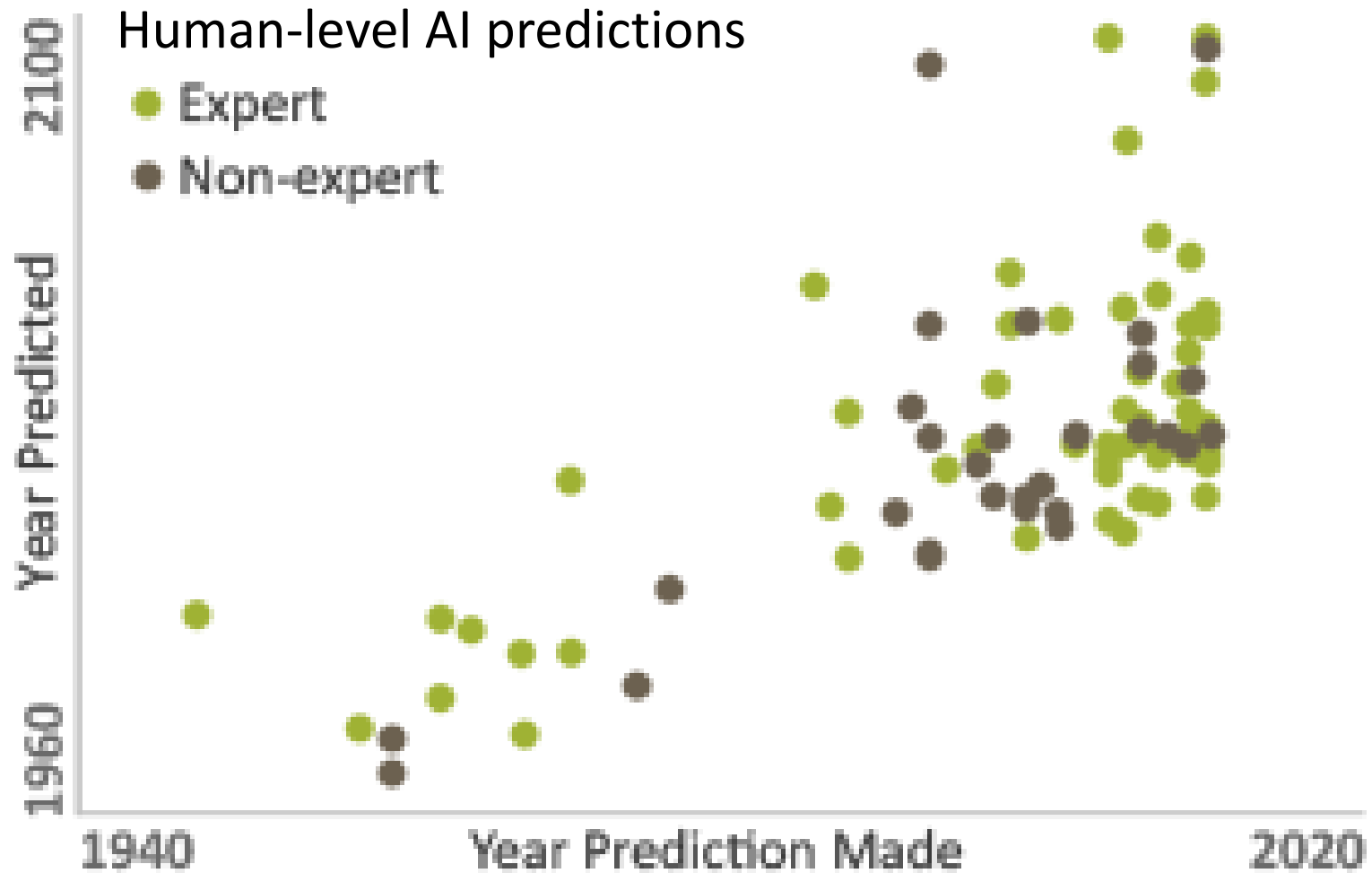
Reality Check

“We tend to overestimate the effect of technology in the short run...

"and underestimate the effect in the long run.”

Source: Roy Amara, Former President,
Institute for the Future

Should we bother ?



Source: MIRI, "Predicting AI"

The difficulty in forecasting technology

1996 TECHNOLOGY FORECAST
TOMORROW'S PDAs

PDA's Will Come Of Age In The Nineties

It took an extra decade !

Despite An Embarrassing Debut, PDAs May Still Become The Road Warrior's Weapon Of Choice, As Advanced DSPs Enhance Their Connectivity.

Let's face it folks, the first PDA generation is the functional equivalent of the "luggable" Kaypro of the early 1980s—not quite "there" yet. They've been derided by industry observers as "organizers on steroids," yet for all of the snickering and jibes (see the Doonesbury cartoons), there's a potent new idea taking shape. Truly, the Newton is a discontinuity in a previously linear evolutionary path. It is a new class of machine, which hasn't yet emerged from its infancy. Remember, it took at least five years for the laptop, then notebook computer, to emerge as a reasonable alternative (and supplement) to desktop computers. It would be a mistake to conclude from the demise of the EO pen-based computer and Newton's underwhelming sales that the PDA concept is dead. PDAs aren't

- Techie part mostly correct
- Second-order effects were missed:
 - Music
 - Cameras
- No forecast of third-order effects (shopping etc)
- No forecast of confluence of technologies (Internet, etc)



CHARLES FADEL
Analog Devices Inc., One
Technology Way, Norwood,
MA 02062 (617) 937-1113.

Host processor	
386- or 486-class microprocessor	
Graphics/LCD controller	I/O, PCMCIA control, power management
Pen controller	

Host functions

O/S management
I/O control
Display management
Upper-level communications protocols
Encryption

Audio compression (RPE, VSELP, CELP, etc.)
Cellular (GSM, AMPS, IS-54, IS-95, etc.) voice and data
Modem/fax
Noise cancellation
Echo cancellation
Handwriting recognition
Speech recognition
Text-to-speech
Wireless LAN (DECT, 802.11, etc.)
Ethernet
GPS

1. THE PDA OF THE LATE 1990s WILL FEATURE a custom chip set consisting of a host processor and a DSP coprocessor. Many of the tasks that are difficult or impossible for the host processor to handle alone will be implemented on the DSP coprocessor. These tasks include compression and decompression, modulation and demodulation, along with

Projection Occupational Employment Trends: *Bank Tellers*

1968

- “Important clerical occupations such as secretaries, stenographers, typists, cashiers, bank tellers, mail carriers, postal clerks, and telephone operators are not expected to be heavily affected by the use of computers...”

1980

- “Technological innovations will not affect many types of clerical workers whose jobs involve a high degree of personal contact.”

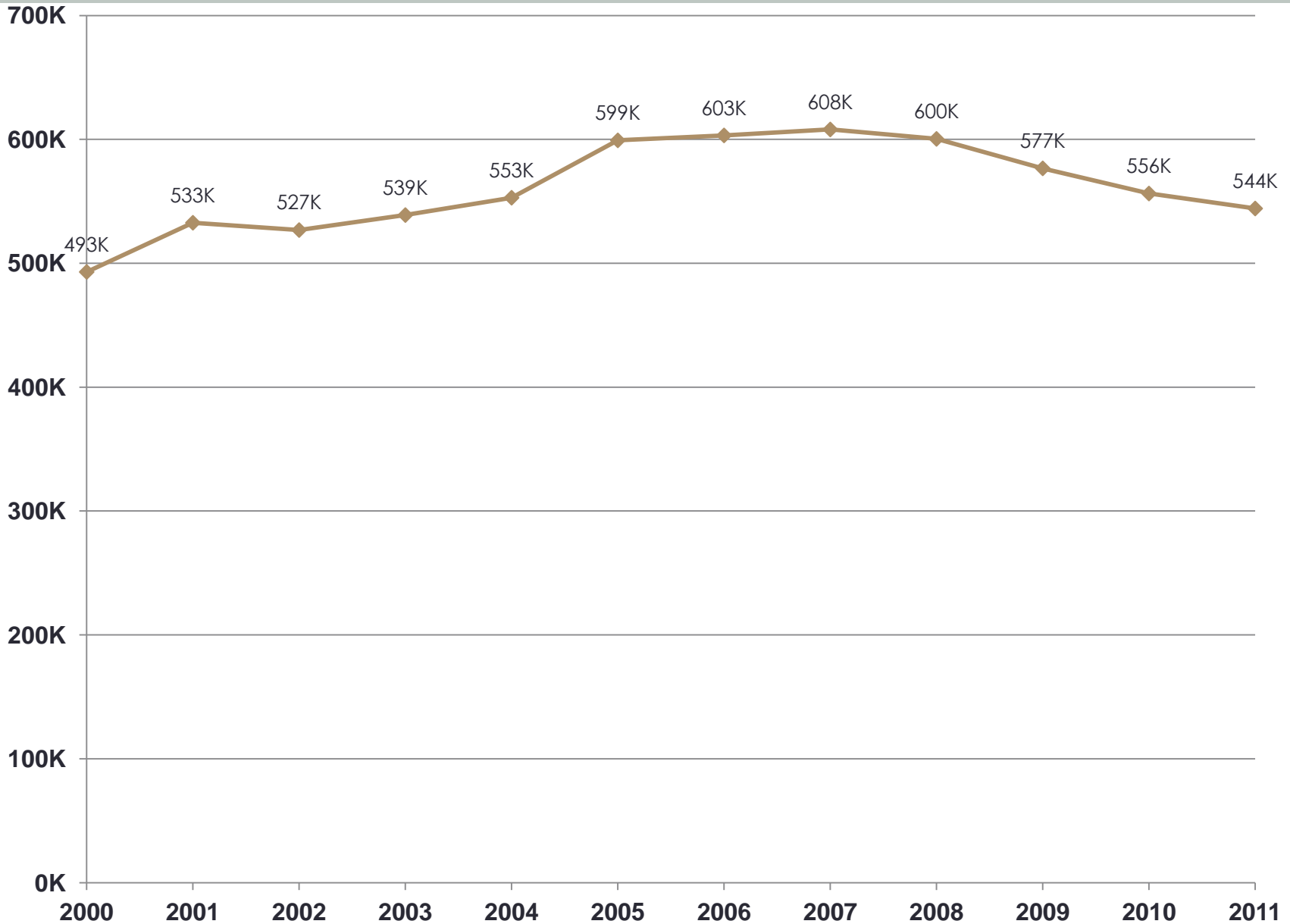
1992

- “... Employment of bank tellers is not expected to keep pace with overall employment growth in banks and other savings and credit institutions because of the increasing use of automatic teller machines...”

2000

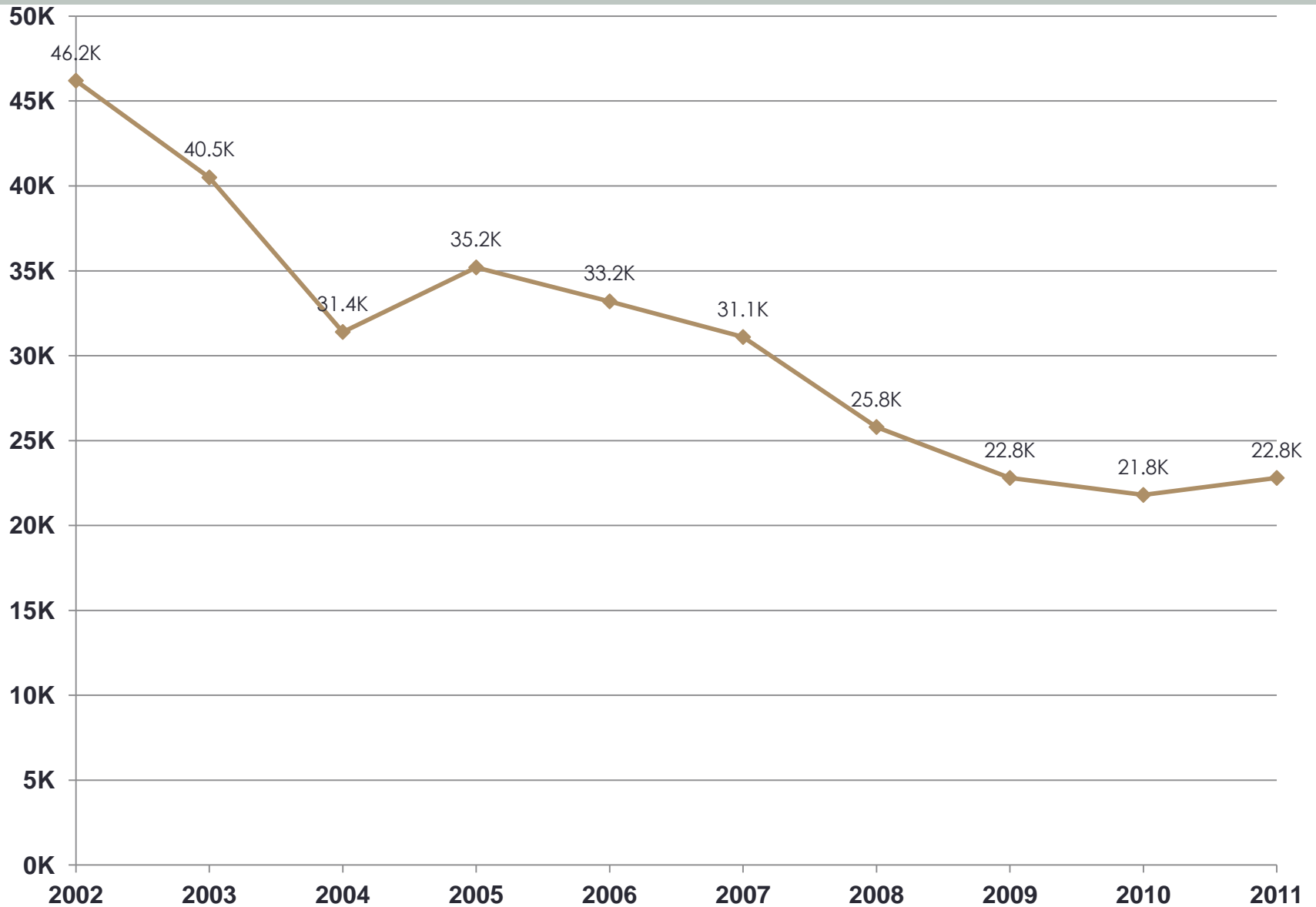
- “... The increased use of ATM machines and Internet banking will reduce the number of tellers.”

Bank Tellers in the U.S. 2000 - 2011



Source: David Autor, MIT

Gas Station Attendants in the U.S. 2000 - 2011



Goals

Via the questions list and agenda, answer: ***Is it possible to reasonably predict the impact of AI/Robotics on employment ?***

- This conversation is an assessment of the possibility to reach a reasonably robust prediction, not the prediction itself.
- Boundary condition: 5-15 years → NO generalized AI

Thank you !

“What should students learn for the 21st century™?”



CENTER _{FOR}
CURRICULUM
REDESIGN

www.curriculumredesign.org

Twitter: @CurrRedesign